

# #COMMUNITY IS THE ANSWER NEWSLETTER

Volume 3 December 2020

## ECOSYSTEM STRENGTHENING THROUGH PARTICIPATORY PRACTICES

### #NCC2020 AT A GLANCE

Ecosystem Strengthening is one of Gateway Zimbabwe's three pillars of programming, where civil society and community-based leaders who join us on our journey are offered multi-stakeholder exposure to participatory community practices that bring together diverse Zimbabweans in transformative and culture-building processes.

This arm of Gateway's programming includes practices and immersive experiences such as ["GoDeep Community Building Game"](#) and Community Assemblies; social processes including ["Art of Hosting Conversations that Matter"](#) and the ["Theory U"](#); emergence and systems-based leadership, including [Systems Mapping](#); conflict transformation processes such as ["ProcessWork"](#); and creative arts such as visual scribing, graphic harvesting and poetry. These are aimed at strengthening and broadening our capacity to respond to the complexities facing our communities.

One of our most recent convening processes was the third **National Citizens' Convention**, held from the 4th to the 6th of November 2020. The annual event was held under the theme **"#NoneButOurselves: Re-imagining the Future After COVID-19."**

#### Topics under discussion

1. Forging a New Social Contract Based on Trust, Agency and Solidarity Begins with Us
2. Participatory democracy and constitutionalism: Creating Room for Everyone
3. **An Inclusive and Sustainable Economy: Getting our National Wealth to Serve Our Communities and Conserve our Environment**

Organised as a hybrid online and onsite format using Zoom, Facebook Streaming, [Sli.do](#) and over 25 groups across the country meeting in groups ranging from 15 to a maximum of 50 people, this year's edition truly showed us how a new level of self-organizing and opportunities for even greater inclusion and participation can be achieved, in spite of great logistical challenges. The plenary sessions and WorldCafe-style discussions received massive participation and input from the communities and on-site gatherings with a rich harvest of ideas and contributions, that were shared through the Zoom, Facebook and [Sli.do](#) platforms and captured in graphic harvests each day by artist Sonja Niederhumer (images above and below).



Day 2 graphic harvest image

IT'S US AND IT'S NOW: WHATEVER THE QUESTION COMMUNITY IS THE ANSWER.

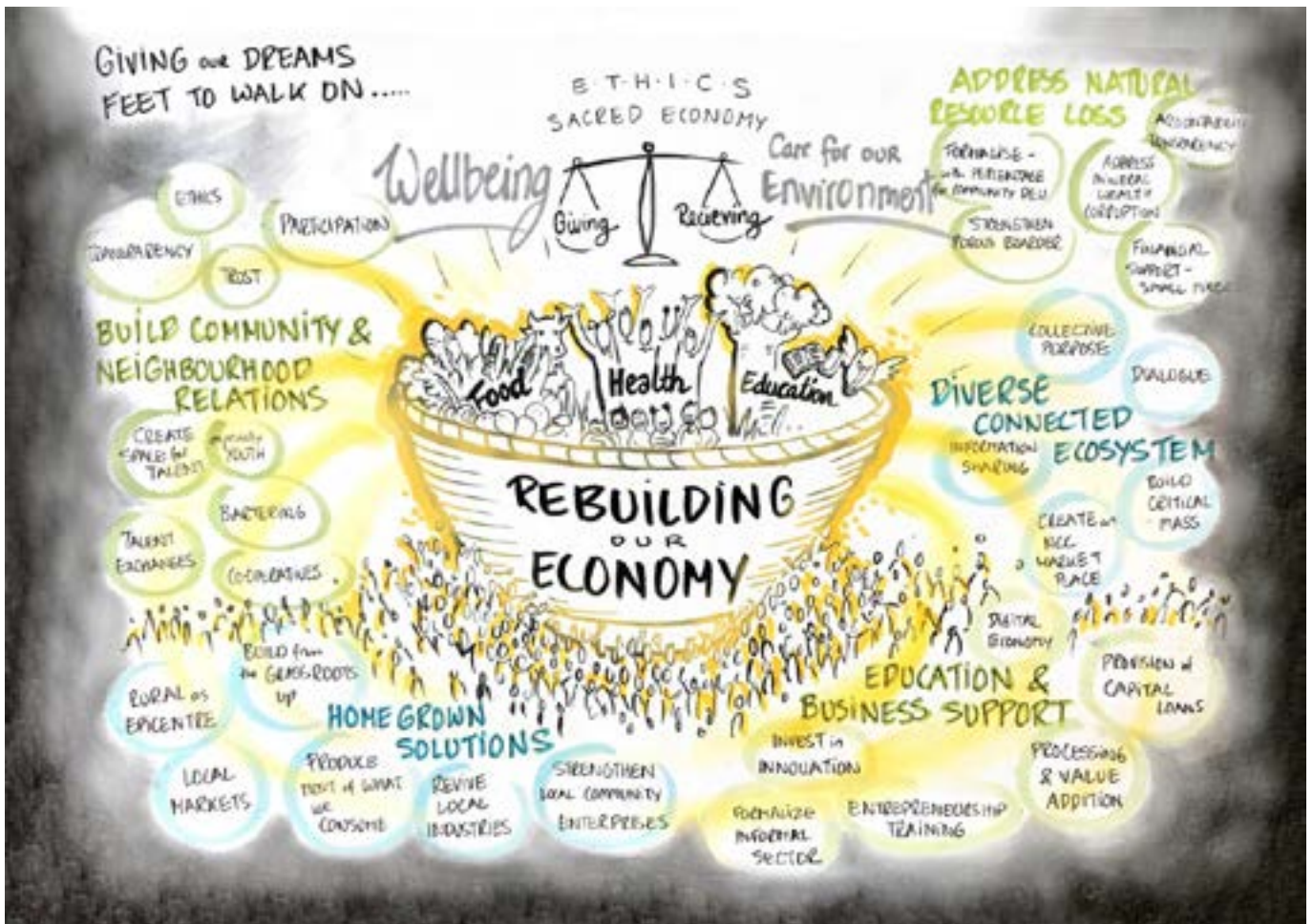
There were some very practical and realistic suggestions of how we can all contribute - even at individual level - to a better Zimbabwe, including building on mutual aid networks & local economies from the COVID-19 experience for greater solidarity & sustainability.

These resolutions and commitments, some of which are captured in the graphic harvest image below, will inform our planning and activities going forward.

Gateway Zimbabwe is grateful for the collaborative efforts of all the partners, organisations and communities, which made this NCC such a success. In the words of one of the Gateway co-conveners:

*“#NCC2020 has been the continuation of something and it has also been the beginning of something”*

*The graphic harvest from the final day of the NCC, showing practical and pragmatic contributions that each of us can make in our communities as we  
#ReweaveTheSocialFabric*



IT'S US AND IT'S NOW: WHATEVER THE QUESTION COMMUNITY IS THE ANSWER.



In case you missed the three-day event,  
you can still watch the sessions that were  
being live-streamed on Facebook:

<https://bit.ly/3qgA7gA>

*(Citizens' Manifesto Facebook page)*

***Pictures of NCC2020 attendees at some  
of the on-site locations:***



IT'S US AND IT'S NOW: WHATEVER THE QUESTION COMMUNITY IS THE ANSWER.



## SAVE THE DATE

**Wednesday 9 December 2020 2pm-4pm (CAT)**

Gateway Zimbabwe participating in CSVr Blended Voices Webinar

Gateway Zimbabwe is honoured to be part of the CSVr (Centre for the Study of Violence and Reconciliation) 2020 Symposium Webinar Series. The series, running under the theme “BLENDED VOICES: Building an understanding of torture, war trauma and violence through an African lens” is set into five related sub-themes, presented from October 2020 to March 2021.

On Wednesday 9 December 2020, Gateway Zimbabwe will be presenting as part of the third theme in the series “Torture and trauma rehabilitation in Africa: Can it influence the narrative of violence among African people and facilitate healing?”

Gateway Zimbabwe will delve into the experiences from our journey and the processes and practices that we have learnt and used collectively in search of ways of healing our woundedness and reweaving the social fabric. We explore what has worked and where we see energy and potential to find further ways in which to acknowledge and heal our past, as individuals, as communities and as a nation - as well as rediscovering our own resilience and resourcefulness.

The format of this contribution is a conversation circle that will offer the opportunity to meet and for a moment join into conversation and experience the embodied work of Gateway Zimbabwe.

The webinar series will be on Zoom as well as live-streamed on the [CSVr Facebook page](#).

Register here [https://zoom.us/webinar/register/WN\\_BdX2WqHNSRiPxaYbF8s3gA](https://zoom.us/webinar/register/WN_BdX2WqHNSRiPxaYbF8s3gA) for the Zoom link visit [www.csvr.org.za](http://www.csvr.org.za) for more information. We look forward to seeing you there!



**2020  
CSVr  
SYMPOSIUM**

CSVr brings you theme 3 in our 6 part webinar series presented monthly from October 2020 to March 2021

**THEME 3:  
Torture and trauma  
rehabilitation in Africa**

9 December 2020 | 14:00 - 16:00

Moderator: **Sufiya Bray**  
Advocacy Project Manager  
CSVr

No mental health without social health  
Exploring continuous traumatic stress environments and its impact on wellbeing  
**Sumaiya Mohamed**  
Counselling Psychologist  
CSVr

The impact of inadequate torture and trauma rehabilitation on individuals and the long term effects on societies  
**Charlotte Mabeani**  
Social Worker  
CSVr

Extrapolations of the effects of torture on the mental health of asylum seeking and refugee populations who present with borderline personality organization in South Africa  
**Annina Mwaikambo**  
Counselling Psychologist, CSVr

New eyes, embodied roots  
**Gateway Zimbabwe**

 **DIGNITY**  
DANISH  
INSTITUTE  
AGAINST TORTURE 

 **USAID**

Interpretation will be made available according to need.

[https://zoom.us/webinar/register/WN\\_BdX2WqHNSRiPxaYbF8s3gA](https://zoom.us/webinar/register/WN_BdX2WqHNSRiPxaYbF8s3gA)